



High School  
(Gr 8 - 12)



PACKA-CHING®  
MAKE SOME KILORANDS



# TOP 10 GLOBAL LITTER ITEMS

1



Cigarette  
**BUTTS**



2



**FOOD WRAPPERS**  
(sweets and crisp packets)

3

**PLASTIC  
DRINK  
BOTTLES**



4



plastic bottle  
**CAPS**

5



**STRAWS**

6

**PLASTIC grocery  
BAGS**



7



**GLASS DRINK  
BOTTLES**  
(soda, beer and wine)

8



**OTHER PLASTIC  
BAGS AND PACKETS**

9

**PAPER  
BAGS**



10



**SODA  
CANS**

**CHECK  
YOUR GUILT  
FACTOR!**



## HOW TO RECYCLE

- 1 Make sure the product can be recycled.
- 2 Rinse your recyclable packaging in used water (fresh water is wasteful).
- 3 Allow it to drip dry.
- 4 Place the clean recyclable packaging in a carrier bag, separate from your normal waste.
- 5 Make sure to separate your different materials into different bags.
- 6 Participate in the PACKA-CHING initiative in your neighbourhood.

You can squash your plastic and cans to make them a lot smaller so you can fit far more in your bag!

# RECYCLING

**RECYCLING** means taking something old and turning it into something new, through a mechanical process.

**RECYCLE** because it can save the planet from running out of energy and resources.

## WHY SHOULD WE COLLECT & RECYCLE?

- IT REDUCES LITTER
- IT SAVES ENERGY
- IT LOOKS AFTER NATURE
- IT LEAVES THE PLANET A BETTER PLACE
- IT REDUCES POLLUTION IN THE AIR
- USED PACKAGING HAS VALUE



## RECYCLE YOUR LITTER

### • PLASTIC •



### • GLASS •



### • PAPER •



### • CANS •





# WHAT CAN WE RECYCLE?



## PLASTIC

In **South Africa** we can recycle a lot of different types of plastic, but not all of them. When we recycle plastic mechanically, it can be made into new things.



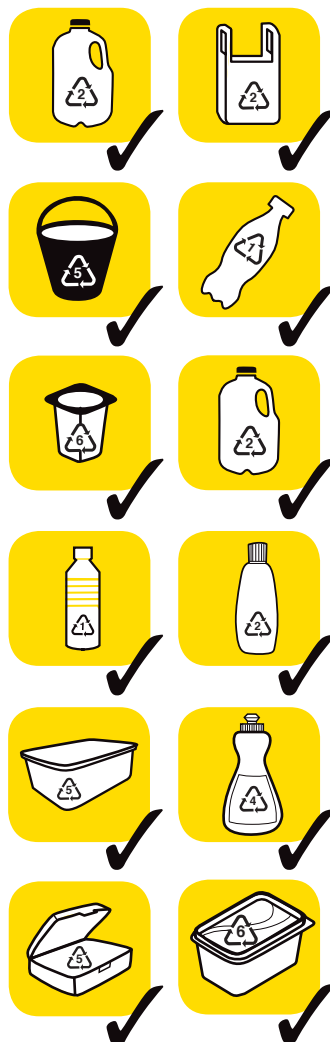
### PLASTIC THAT WE CAN RECYCLE:

- Foam / polystyrene packaging
- Plastic bottles
  - Plastic trays / tubs (not ♻️)
  - Plastic bags
  - Plastic buckets



### PLASTIC THAT WE CANNOT RECYCLE:

- Chip packets
- Sweet wrappers
- Washing powder bags
- Sauce sachets
- Dirty clamshell packaging





# Tips for collecting PLASTIC



## THERE ARE MANY DIFFERENT TYPES OF PLASTIC.

Each one is represented by a special code inside a small triangle. You will find the numbers 1, 2, 3, 4, 5, 6 or 7.

**ALL MATERIALS MUST BE SEPARATED INTO DIFFERENT BAGS BEFORE THEY CAN BE TAKEN TO THE PACKA-CHING TRUCK (NOTE: NOT ALL NUMBERS ARE ACCEPTED).**



Soft drink, juice and water bottles.

**Only clear and blue bottles will be accepted by PACKA-CHING.**



Common white or coloured plastic, like milk bottles and shampoo/detergent containers.



Hard, rigid, clear plastic, like water bottles and cordial bottles.



**Unfortunately number 3 plastics will not be accepted by PACKA-CHING**



Soft, flexible plastic bottles, like squeezable sauce bottles and plastic film products such as bread bags.



Hard but flexible plastic, like ice cream and lunch boxes.



Rigid, brittle plastic, like margarine tubs, yoghurt tubs & foam/polystyrene containers.



Multi-layered packaging such as sauce sachets, soup packets and crisp packets.



**Unfortunately number 7 plastics will not be accepted by PACKA-CHING**

# PAPER

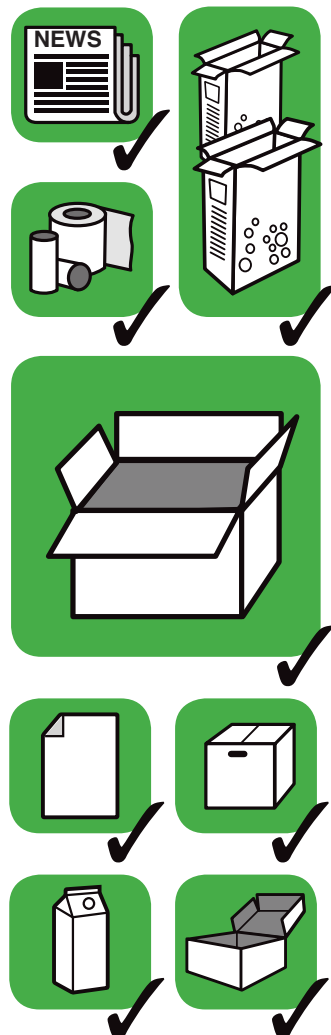
## PAPER THAT WE CAN RECYCLE:



- Cardboard of any kind (dry food, cosmetic & medicine boxes, toilet roll cores)



- Office paper
- Magazines and brochures (including glossy kinds)
- Newspapers
  - Envelopes
  - Liquid packaging (milk and juice)



## PAPER THAT WE CANNOT RECYCLE:



- Dirty paper plates
- Wet or dirty paper or cardboard
- Disposable nappies
- Tissues, toilet paper and paper towels
- Dog food bags
- Wax-coated or foil-lined boxes
- Used cement bags
- Carbon paper

LET US START  
CLEANING UP!



# GLASS

## GLASS THAT WE CAN RECYCLE:

- Cool drink, juice and water bottles
- Food and sauce bottles and jars
- Wine and alcohol bottles
- Clear drinking glasses
- Beer bottles



## GLASS THAT WE CANNOT RECYCLE:



- Clay flower pots
- Window pane glass
- Ceramic cups and plates
- Heat-resistant ovenware
- Crystal
- Light bulbs
- Mirrors and windscreen glass
- Crystal drinking glasses & tumblers

# CANS

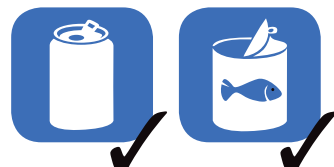
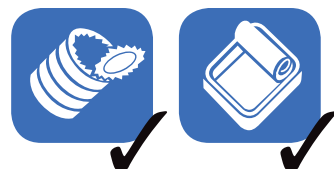
STEEL AND ALUMINIUM CANS MUST BE SEPARATED.

PLEASE USE YOUR MAGNET TO CHECK WHICH CANS ARE ALUMINIUM AND WHICH ARE STEEL. Remember, the magnet will stick to the steel cans. Once you know which is which you must separate them.

## CANS THAT WE CAN RECYCLE:

Aluminium and steel cans:

- Beverage cans
- Food cans



UNFORTUNATELY, THE FOLLOWING CANS WILL NOT BE ACCEPTED BY PACKA-CHING:



- Aerosol cans

# THE TRUTH OF RECYCLING & IMPACT FACTS

**PLASTIC RECYCLING**

BEGAN IN **1977**

GLOBALY... **10 MILLION** PLASTIC SHOPPING BAGS ARE USED!



• **GLASS** •

GLASS TAKES OVER **1 000 000** YEARS (ONE MILLION)

**DECOMPOSE** (BREAKDOWN AND DISAPPEAR) IN OUR LANDFILLS OR DUMPS.



EVERY BIT OF **PLASTIC** THAT HAS EVER BEEN PRODUCED STILL EXISTS TODAY!

**RECYCLING PLASTIC** IS ONE OF THE EASIEST WAYS TO FIGHT CLIMATE CHANGE.

**70%** ENERGY IS SAVED IN MANUFACTURE IF IT IS RECYCLED!



PLASTIC IS RESPONSIBLE FOR APPROXIMATELY

**10%** OF THE WORLD'S **WASTE!**



RECYCLING **1** tonne of paper saves **3** CUBIC METERS of landfill space

PLASTIC IS THE LARGEST SOURCE OF OCEAN LITTER. ENOUGH PLASTIC IS THROWN AWAY EACH YEAR TO CIRCLE THE EARTH 4 TIMES.



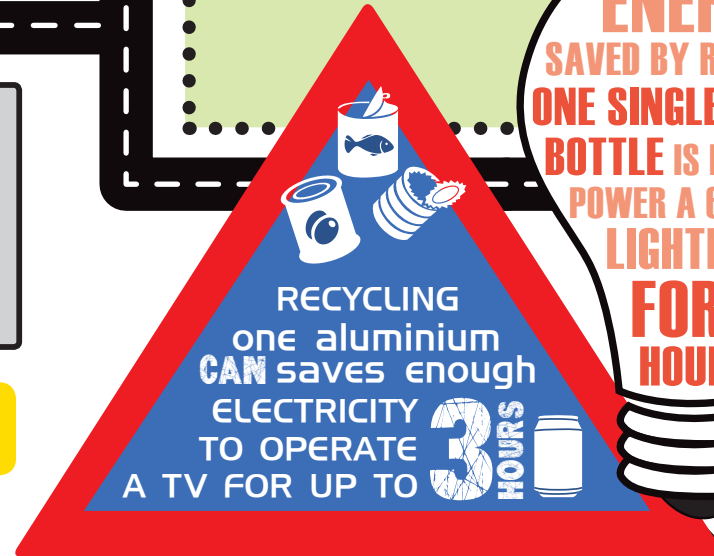
**92%** OF DEAD SEABIRDS FOUND SHOW THAT 5% OF THEIR BODY WEIGHT IS INGESTED PLASTIC.

**2017** **300 MILLION TONNES** OF PLASTIC WILL BE PRODUCED **WORLDWIDE!**



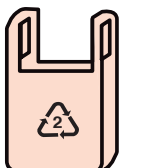
THE **ENERGY** SAVED BY RECYCLING ONE SINGLE PLASTIC BOTTLE IS ENOUGH TO POWER A 60-WATT LIGHTBULB FOR **6 HOURS.**

RECYCLING one aluminium can saves enough ELECTRICITY TO OPERATE A TV FOR UP TO **3 HOURS**



SHOP WITH YOUR OWN **BAGS!**

**1%** ONLY ONE PERCENT OF PLASTIC SHOPPING BAGS ARE RECYCLED!





# GREEN CAREERS

Want a good job that's also geared towards saving the planet?

The 'green sector' could be just the work environment that you're looking for!

As concern for the **ENVIRONMENT** and the future of our planet has increased, opportunities in the environmental job market have also increased.

As with any career field, jobs in the environmental portfolio are also varied. You could end up doing exciting scientific research, desk work, field work, or some combination thereof. Your focus could be mathematical, physical or written.

If you have an interest in a specific field, knowing what is available to you is critical when choosing a career.

Finding something you enjoy doing within the broad scope of the environment field shouldn't be very difficult when there are so many options.



## DIFFERENT TYPES OF CAREERS IN ENVIRONMENTAL PROTECTION

- **OUTDOOR & FIELD-BASED JOBS** (eg. wildlife preservation)
- **TRADITIONAL JOBS WITH GREEN ALTERNATIVES** (eg. green car manufacturing)
- **RENEWABLE ENERGY JOBS** (eg. wind turbine technology)
- **REGULATION & POLICY-MAKING JOBS** (eg. environmental protection agency officers)





# GREEN JOBS

## WHO THEY ARE AND WHAT THEY DO!



**Environmental engineers** use the principles of engineering, soil science, biology, and chemistry to develop solutions to environmental problems. They are involved in efforts to improve recycling, waste disposal, public health and water and air pollution control.



An **ENERGY AUDITOR** inspects, surveys and analyses energy flows for energy conservation in a building, process or system, to reduce the amount of energy input into the system without negatively affecting the output.

A **HYDROLOGIST** is a specialised type of scientist who studies water and the water cycle. They use their expertise to solve problems in the areas of water quality or availability.



A **CONSERVATION SCIENTIST** is someone who manages the overall land quality of forests, parks, rangelands and other natural resources. They work with landowners and all levels of government to devise ways to use and improve the land while safeguarding the environment.

An **URBAN PLANNER** or **CITY PLANNER** is a professional who works in the field of urban planning for the purpose of optimising the effectiveness of a community's land.



The **MUNICIPALITY** offers many environment-related jobs. These may include Drivers, Logistics Managers, Communications Officers, Project Managers and more.

An **ENVIRONMENTAL CONSULTANT** works with organisations on a range of environmental issues, offering expert advice and assessment services to ensure that possible damaging effects are minimised or eliminated.



**ENVIRONMENTAL PLANNERS** are responsible for developing short and long-term plans for land use in urban and rural areas while balancing considerations such as social, economic and environmental issues.





# PACKA-CHING

## MAKE MONEY FROM RECYCLING



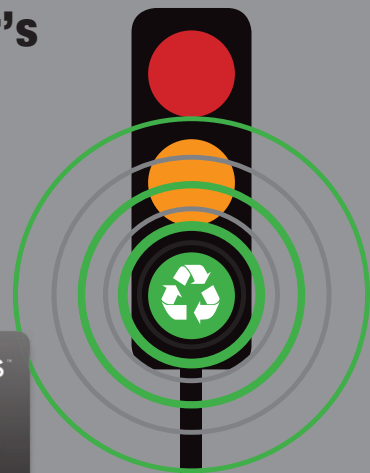
### HOW IT WORKS:



- 1** The PACKA-CHING truck arrives at its parking spot.
- 2** The community brings in bags of separated recyclable materials.
- 3** The member's card is swiped to bring up their details and their materials are then weighed.
- 4** Money for the materials is transferred onto the member's card.
- 5** This card can be used like a bank card, but not to withdraw cash.



**PACKA-CHING™**  
MAKE SOME KILORANDS



# THIS IS FOR YOU AND YOUR COMMUNITY ...



## THE WHOLE COMMUNITY WINS!

For every **1 kg** of recyclable material weighed, **R1** will be donated into a community fund.

Every 6 months, this money will be put towards a community project. It could be a local school, a library or even a sports field!



**PACKA-CHING™**  
MAKE SOME KILORANDS



## TRASH IS CASH!

START  
COLLECTING AND  
RECYCLE!

GET  
EVERYONE  
INVOLVED!

TELL YOUR  
FAMILY  
TO GO TO  
PACKA-CHING  
AND HELP THEM  
TO COLLECT  
RECYCLABLE  
MATERIALS TO  
EARN MORE KILORANDS.





**LOL**  
**ON THE LIGHTER**  
**GREEN SIDE ...**



What did the  
tree hugging  
hottie say to the  
guy in the SUV?

*Turning off your  
engine gets my  
motor humming.*

Did you hear the one about the  
aluminium recycling plant?  
**It smelt!**



**I HAVE AN  
OBSESSION WITH  
WIND FARMS.**

**REALLY?**

**YES. I'M A  
HUGE FAN.**

How bad was the  
BP Gulf oil spill?  
So bad they started  
drilling for water!



**GLOBAL  
WARMING  
IS AN ANAGRAM OF:  
BALL  
GOING  
WARM**

What's the  
difference between  
weather and climate?

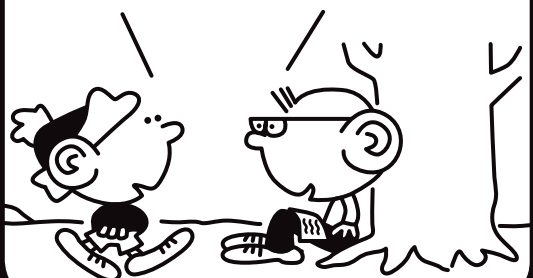
You can't weather  
a tree, but you can  
climate.

**WHY ARE RECYCLE  
BINS OPTIMISTIC?  
BECAUSE THEY'RE  
FULL OF 'CANS'.**



WHAT IS  
RECYCLING?

GETTING ON YOUR  
BIKE TWICE.



**HOW DO OIL  
COMPANIES  
DEAL WITH  
TANKER SPILLS?**

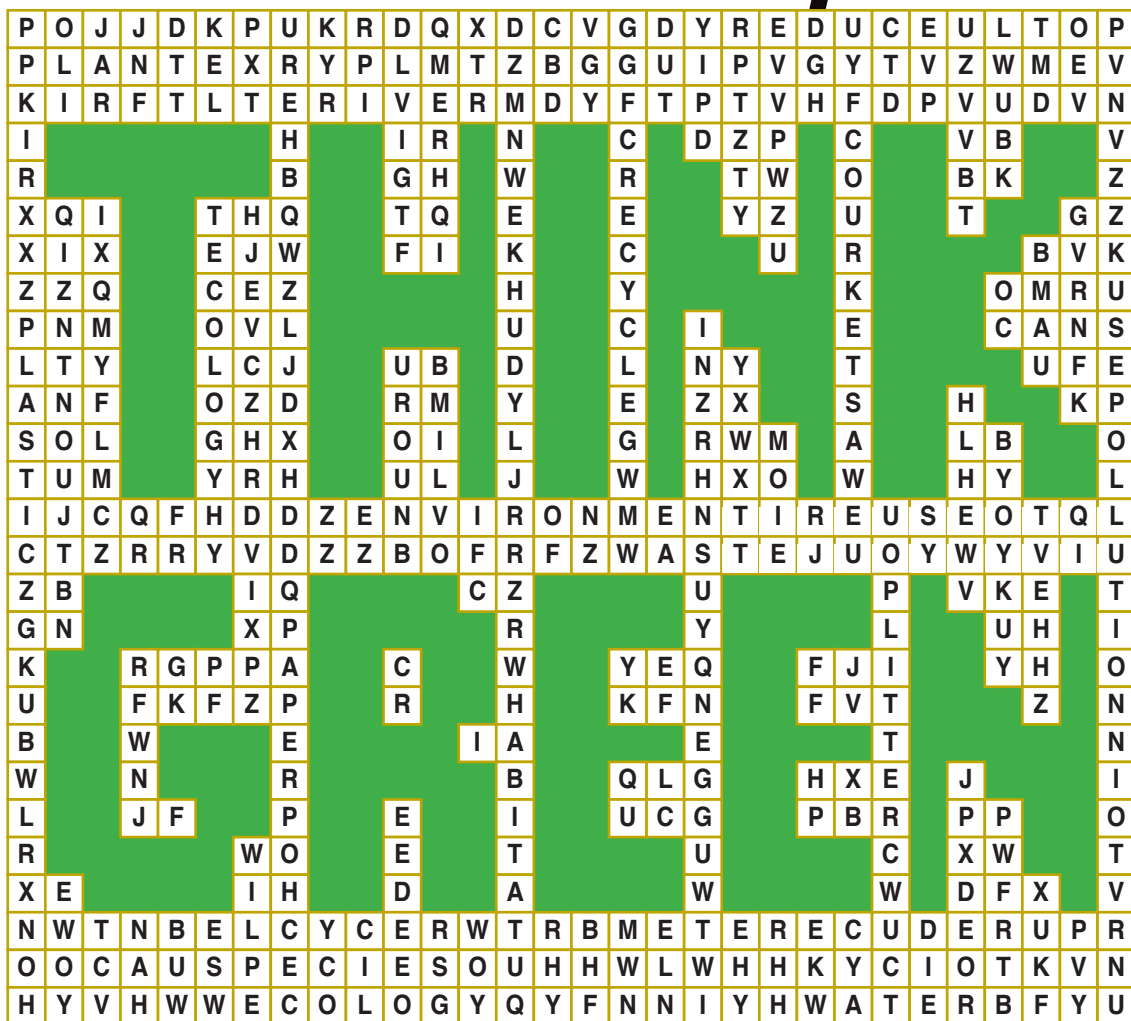


**SLICK  
LAWYERS.**



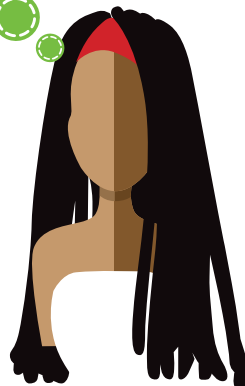
# WORDSEARCH CHALLENGE

FIND THE WORDS IN THE BLOCK BELOW.



RIVER  
PAPER  
PLANT  
WATER  
REUSE  
WASTE  
REDUCE  
PLASTIC

CANS  
LITTER  
SPECIES  
HABITAT  
RECYCLE  
ECOLOGY  
POLLUTION  
ENVIRONMENT



Polyco 



**PACKA-CHING®**  
MAKE SOME KILORANDS

[www.packaching.co.za](http://www.packaching.co.za)

Produced by **FREE 4 ALL** Pty Ltd  
[www.free4all.co.za](http://www.free4all.co.za)